



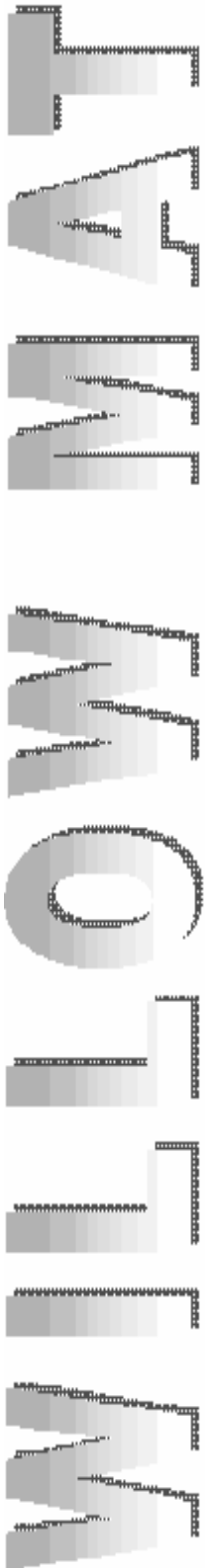
Working Principal

Willow Mat Machine consists mainly of three basic machines i.e., Feed System, Step Cleaner and High Speed Condensor. The Control panel is provided to regulate the feed and the number of passages the material has to pass in Step Cleaner. The Condensor and Step Cleaner motors are direct on motors for which Push Button Switches are provided and the Feed Table motor is controlled by a Timer. The Step Cleaner is provided on the delivery side with a damper system, which when open, shall allow the material to be sucked by Condensor and the same is dropped in the Step Cleaner again for repeated operation.

The damper in close position will allow the material to either drop on the ground through a Delivery Funnel or can be connected to a Condensor placed on a bin. There are three basic timings for which timers are provided and these Timers can be individually set for required settings. The first Timer is to control the Feed Table which will allow the material to be delivered to the step cleaner which is called Feeding Timer. The second Timer will allow the material to rotate into the Step Cleaner which is called Cleaning Timer. The third Timer is for emptying, which will allow the material to either drop down to the ground or can be delivered to subsequent machine.

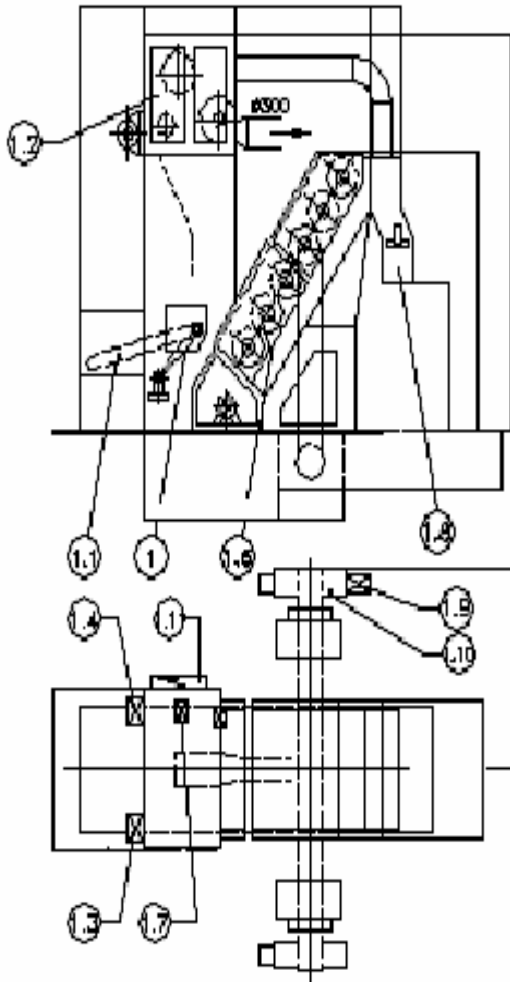


The Feed timer and the cleaning timer are adjusted depending on the type of material to be processed. If it is dirty material such as Blow Room waste, then the feed is restricted, and the cleaning timer is increased for better cleaning. But in case of flat strips, the cleaning timer can be reduced, as the material fed is comparatively cleaner. The production of the Willow Mat will depend upon the quality of the material to be fed into the Willow Mat. In case there is higher lint, the production will be more and in case of lower lint, the production will be less. Production of 80 to 100 kg/hr for Blow room droppings and Licker in waste and 300 to 400 kg/hr for Flat strip can be expected from the Willow Mat.





WILLOW MAT



1. WILLOW MAT (HWM)

- 1.1 FEED TABLE**
- 1.2 HIGH SPEED CONDENSOR**
- 1.3 MOTOR FOR STRIPPER ROLLER,
0.75kw, (960) MIN.⁻¹**
- 1.4 MOTOR FOR FAN DRIVE 4kw, 2800
MIN.⁻¹**
- 1.5 GEAR MOTOR FOR MATERIAL
TRANSPORT 0.18kw**
- 1.6 STEP CLEANER**
- 1.7 MOTOR FOR BEATER DRIVE 3kw,
950 MIN.⁻¹**
- 1.8 ELDRO EQUIPMENT FOR
REVERSING FLAP**
- 1.9 GEAR MOTOR FOR WASTE
ELEVATOR 0.37kw.**
- 1.10 WASTE ELEVATOR**
- 1.11 PROGRAMME CONTROL SYSTEM
CONNECTED LOAD = 8.62 kw
I.G.W. = INNER FRAME WIDTH
TOTAL WEIGHT = 3400 Kgs
R.P.M = REVOLUTIONS FOR 50HZ
EXHAUST AIR = 3600 M³/HR**



Henna Tex

5/12, Manish Ind. Estate, Navghar, Vasai (E.), Dist: Thane - 401 210, INDIA.
Tel/Fax: +91 - 0250 - 2321522/+91 - 9820083040 Email: hennatex@mtnl.net.in
Website: www.hennatex.com